

ALL ABOUT BONNEVILLE



Pontiac backs every 2001 Bonneville with an extensive three-year/36,000-mile bumper-to-bumper limited warranty, free Courtesy Transportation and 24-hour Roadside Assistance that provides free lockout assistance, free dead-battery assistance, free out-of-fuel assistance, free flat-tire change and free towing for warranty repairs in an emergency. Roadside Assistance membership is free, however some services may incur costs.

For even more information on features, pricing and special promotions, go online to pontiac.com/bonneville, or call 1-800-2PONTIAC.

FEATURES & OPTIONS

	SE	SLE	SSEi
Air bags: Frontal driver and right passenger*	S	S	S
Side-impact air bags, seat-mounted, driver and right front passenger*	S	S	S
Air conditioning: Manual	S	-	-
Automatic, dual-zone with outside air temperature indicator	A**	S	S
Console, front floor with storage and rear HVAC vents	S	S	S
Cruise control	S	S	S
Defogger, electric rear window	S	S	S
Emergency road kit	-	-	S
Filter, pollen	A**	S	S
Front license plate depression cover	S	S	S
Head-Up Display	-	-	S
Instrumentation: Backlit, analog, speedometer, tachometer, fuel, coolant temperature, battery voltage and oil pressure	S	S	S
Systems monitor includes coolant temperature, oil pressure indicator, battery voltage and parking brake light	S	-	-
Driver Information Center includes: Electronic compass, check oil level, washer fluid low, low coolant, check gauges (oil pressure, battery voltage, coolant temperature), tire pressure, hood ajar, trunk ajar and lamp monitor (Supercharged models include boost gauge)	-	S	S

<i>features & options continued</i>	SE	SLE	SSEi
Interior with bucket seats (Geneva cloth), illuminated visor vanity mirrors, console with rear heater/air conditioning vents, overhead console with power outlet	S	S	-
Keyless entry system, remote with panic button and personalization feature	S	S	S
Leather seating areas	A**	A	S
Lights: Daytime running lamps with Twilight Sentinel	S	S	S
Headlamps, halogen clear lens with reflector optics	S	S	S
Illuminated entry system	S	S	S
Mirrors: Electrochromic, inside rearview	-	-	S
Illuminated visor vanity, RH and LH covered	S	S	S
Exterior, sport, power	S	-	-
Exterior, heated with blue tint, power (parking assist and memory on SSEi)	-	S	S
Moldings: Integrated bodyside molding with chrome detail	S	-	-
Ribbed, aggressive monotone bodyside applique and rocker moldings	-	S	S
OnStar communication and assistance service with one-year Safety & Security plan†	A**	S	S
Power door locks, automatic with lockout protection and delayed locking feature	S	S	S
Power windows with driver and passenger "express-down" feature	S	S	S
Radios: Delco 100 Series RDS AM/FM stereo with auto-reverse cassette, programmable equalization, clock and Delco TheftLock	S	S	-
Delco 100 Series RDS AM/FM stereo with compact disc player, programmable equalization, clock and Delco TheftLock	A	A	-
Delco 100 Series RDS AM/FM stereo with cassette, compact disc player, programmable equalization, clock and Delco TheftLock	A	A	S
Delco 12-disc trunk-mounted CD player (not available as a dealer-installed option)	A**	A	A
6-speaker system	S	S	-
Bose Hi-Performance 8-speaker sound system with Delco RDS AM/FM stereo with cassette, CD player, programmable equalization, clock and Delco TheftLock	-	-	S

<i>features & options continued</i>	SE	SLE	SSEi
Rear-seat pass-through	S	S	S
Seats: 55/45 split bench with manual recliners and storage armrest with dual cupholders, Geneva cloth trim	A	-	-
45/45 bucket with center console storage, Geneva cloth trim and driver manual lumbar	S	S	-
45/45 bucket-Connolly leather seating areas, includes leather-wrapped steering wheel with radio controls, driver manual lumbar and rear storage armrest	A**	A	-
45/45 articulating bucket 12-way power, driver and front passenger-Connolly leather seating areas with driver memory	-	-	S
Heated seats: Driver and front passenger	-	-	A
Seat & Heat package, includes power passenger seat and heated driver and front passenger seat	A††	A††	-
Power driver seat, 6-way (bench)	A	-	-
Power driver seat, 6-way (bucket)	S	S	-
Spoiler, rear deck lid	S	S	S
Steering wheels: 4-spoke, urethane, coordinating interior color	S	-	-
4-spoke, leather-wrapped with radio controls	A	S	S
Tilt-Wheel adjustable steering column	S	S	S
Storage, rear center armrest with dual cupholder (Only available with leather seating areas on SE)	A	S	S
Sunroof, power, glass (includes universal garage door opener)	A	A	A
Theft-deterrent systems: PASS-Key	S	S	S
Full-feature theft-deterrent (includes central unlock and fuel-filler door lock)	S	S	S
Tire inflation monitor	S	S	S
Trunk convenience net	S	S	S
Trunk release (with trunk valet feature)	S	S	S

* Always use safety belts and proper child restraints, even in vehicles with air bags. Children are safer when properly secured in a rear seat. See the Owner's Manual for more safety information. See A Note On Child Safety in Occupant Protection section.

** Available in Option Group only.

† Call 1-800-ONSTAR-7 for system limitations and details.

†† Available in AG2 Package only.

S=Standard A=Available - = Not Available

ENGINES & MECHANICAL FEATURES

	SE	SLE	SSEi
Battery, Delco Freedom II with rundown protection feature	S	S	S
Brakes, power disc, with 4-wheel anti-lock braking system (ABS)	S	S	S
Corrosion protection with two-sided galvanized steel doors, quarter panels, deck lid, rockers and aluminum hood	S	S	S
3.8 liter 3800 SFI Series II V6, 205 horsepower @ 5,200 rpm, 230 ft-lbs torque @ 4,000 rpm, electrically controlled 4-speed automatic transmission	S	S	-
Supercharged 3.8 liter 3800 SFI Series II V6, 240 horsepower @ 5,200 rpm, 280 ft-lbs torque @ 3,600 rpm, electronically controlled 4-speed automatic transmission	-	-	S
Engine block heater	A	A	A
Exhaust, stainless steel	S	S	S
Garage door opener, universal (included with sunroof on SE and SLE)	A	A	S
Performance axle ratio	A**	S	S
StabiliTrak	-	-	S
Steering: Power rack-and-pinion	S	S	S
Magnasteer variable-effort	-	-	S
Traction Control	A	S	S

**Available in Option Group only.

SPECIFICATIONS

Engine/drive	Front engine, front-wheel drive
Curb weight (SE)	3,590 lbs.
Fuel tank capacity	18.5 gallons

DIMENSIONS

Interior	SE/SLE/SSEi	Exterior	SE/SLE/SSEi
Head room, f/r	38.7/37.3	Wheelbase	112.2
Leg room, f/r	42.6/38.0	Overall length	202.6
Trunk capacity	18 cu. ft.	Tread, f/r	62.6/62.1

TIRES, WHEELS & WHEEL COVERS

	SE	SLE	SSEi
Tires (steel-belted radial): P225/60R16 blackwall, touring†††	S	-	-
P235/55R17 RSA speed-rated blackwall†††	-	S	S
Compact spare	S	S	S
A 16" 5-spoke cast aluminum	S	-	-
B 17" multi-lace cast aluminum	-	S	S
C 17" high-polished multi-spoke cast aluminum in Bright Chrome	-	A	A

†††Tire chains should not be used. They may cause damage. See Owner's Manual.
Vehicle top speed varies depending on tire selected. See dealer for details.



OPTION GROUPS

Some available options may require additional equipment. See your dealer for details.

Bonneville SE Option Groups

1SB 1SC

Connolly leather seating areas (includes steering wheel radio controls, driver manual lumbar seat, rear storage armrest)	n
Dual-zone automatic air conditioning system with air filtration	n
Mirrors, illuminated visor vanity, LH and RH	n n
OnStar with one-year Safety & Security plan	n
Performance axle ratio - 3.05	n
Power driver seat, 6-way	n n
Delco 100 Series RDS with AM/FM stereo, cassette, programmable equalization and Delco TheftLock	n n
Remote keyless entry (includes panic mode, activation verification, personalization and remote deck lid release)	n n
Steering wheel, leather-wrapped with radio controls	n
Theft-deterrent alarm system (full feature, lights/horn, includes fuel door lock)	n n
Traction control	n
Trunk storage net	n n

n = Included in Option Group

S=Standard A=Available - = Not Available



BONNEVILLE OCCUPANT PROTECTION AND CRASH AVOIDANCE FEATURES

To help contribute to driving safety, the following are some features included in the Bonneville line:

OCCUPANT PROTECTION

- Manual lap/shoulder safety belts for all outboard positions
- Driver and front passenger air bags
- Side air bags
- Catcher's mitt™-style seats
- Self-aligning front headrests
- Rear-seat child safety seat anchors
- Manual lap safety belts, center seating positions
- Illuminated entry
- Energy-absorbing steering column
- Energy-absorbing instrument panel
- Safety armrests
- Breakaway inside rearview mirror
- Security door locks and door retention components
- Laminated windshield glass, bonded
- Head restraints, adjustable, front
- Passenger-guard inside door lock handles
- Side door beams

A NOTE ON CHILD SAFETY



Always use safety belts and proper child restraints, even in vehicles with air bags. Children are safer when properly secured in a rear seat. Never place a rear-facing infant restraint in the front seat of any vehicle equipped with an active air bag. See your vehicle Owner's Manual and child safety seat instructions for more information. Pontiac supports the National SAFE KIDS Campaign® a grass-roots program dedicated to reducing unintentional childhood injuries.

CRASH AVOIDANCE

- Anti-lock braking system, four-wheel
- Brake/transmission shift interlock
- Automatic daytime running lamps
- Side marker lamps
- Parking lamps
- Four-way hazard warning flashers
- Backup lamps
- Directional signal control
- Windshield defroster, washer and multi-speed wipers
- Inside day/night rearview mirror
- Outside rearview mirrors
- Brake system with dual master cylinder plus warning light
- Starter safety switch
- Low-glare finish – inside windshield moldings, wiper arms and blades, metallic steering wheel surfaces, inside rearview mirror frame and bracket

- Dual-action hood latch (front opening)
- Illuminated heater and defroster controls
- Tires with built-in tread wear indicators
- Tire pressure monitor
- LED center high-mounted stop lamp

SECURITY

- Visible vehicle identification number
- Laser-etched VIN plate
- Theft-deterrent steering column lock
- Theft-deterrent key locking system
- PASS-Key II theft-deterrent system
- Remote inside hood release



With this innovative service, an OnStar Advisor is available to contact emergency help, provide directions to the nearest ATM, hotel, restaurant and much more. Even in an accident, where the air bags deploy, OnStar will automatically send a call for help with your Bonneville's exact location to the OnStar Center, where trained Advisors will immediately contact emergency services. And, in the event of theft, OnStar will track your Bonneville and help guide authorities to its location. If you lock your keys in your Bonneville, an OnStar Advisor will send a signal to unlock your vehicle, even from 1000 miles away.

OnStar is always there to help – day or night.

For more information, call 1-800-ONSTAR-7 or visit www.onstar.com.

AND NOW, A WORD ABOUT... THIS CATALOG:

We've tried to make this catalog comprehensive and factual. We must reserve the right, however, to make changes at any time, without notice, in the information contained in this catalog. Since some information may have been updated since the time of printing, please check with your Pontiac dealer for complete details. Pontiac reserves the right to lengthen or shorten the model year for any product for any reason, or to start and end model years at different times.

ENGINES:

Bonneville models are equipped with engines produced by different operating units of GM, its subsidiaries or suppliers to GM worldwide.

UPDATED SERVICE INFORMATION:

Pontiac regularly sends its dealers useful service bulletins about Pontiac products. Pontiac monitors product performance in this field. We then prepare bulletins for servicing our products better. Now you can get these bulletins too. Ask your dealer. To get ordering information, call toll-free 1-800-551-4123.

THE ASSEMBLY OF BONNEVILLE:

Bonneville and its components are assembled or produced by different operating units of General Motors, its subsidiaries or suppliers to GM worldwide. We sometimes find it necessary to produce Bonneville's with different or differently sourced components than originally scheduled. Since some options may be unavailable when your vehicle is assembled, we suggest you verify that your vehicle includes the equipment you ordered, or if there are changes, that they are acceptable to you.

WARRANTY PROTECTION:

Bonneville's three-year/36,000-mile (whichever comes first) no-deductible bumper-to-bumper limited warranty covers repairs, including labor and parts, to correct any defects in material or workmanship occurring during the warranty period. The complete vehicle is covered, except for adjustments and normal maintenance.

CORROSION PROTECTION:

Bonneville's are designed and built to resist corrosion. All body and sheet metal components are warranted against rust-through corrosion for six years or 100,000 miles, whichever comes first. Application of additional rust-inhibiting materials is not required under the corrosion coverage and none is recommended. See your Pontiac dealer for terms of these limited warranties.



PONTIAC, THE PONTIAC EMBLEM, GENERAL MOTORS, THE GM EMBLEM, STABILITRAK, TWILIGHT SENTINEL, THE PONTIAC CARES EMBLEM, DELCO, MAGNASTEER, SSEI and BONNEVILLE are registered trademarks, DRIVING EXCITEMENT is a trademark and PONTIAC CARES is a service mark of the General Motors Corporation. EYECUE, FREEDOM, PASS-KEY and THEFTLOCK are registered trademarks of Delphi Technologies, Inc. RDS is a trademark of the National Association of Broadcasters. ONSTAR, the ONSTAR EMBLEM and the ONSTAR BUTTON are registered trademarks of the OnStar Corporation.

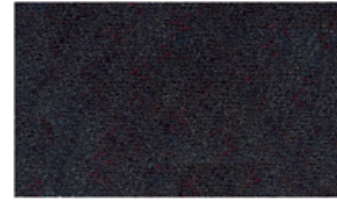
Always use safety belts and proper child restraints, even in vehicles with air bags. Children are safer when properly secured in a rear seat. See the Owner's Manual for more safety information. ©2000 GENERAL MOTORS CORPORATION. ALL RIGHTS RESERVED. LITHO IN U.S.A.

INTERIOR

Geneva cloth in Taupe – standard on SE and SLE with exterior colors 40, 41, 44, 54, 62, 76



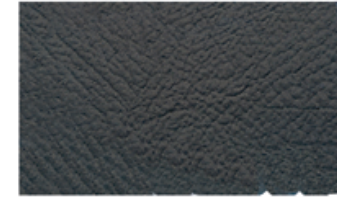
Geneva cloth in Dark Pewter – standard on SE and SLE with exterior colors 12, 40, 41, 44, 62



Connolly leather seating areas in Taupe – standard on SSEi and available on SE and SLE with exterior colors 40, 41, 44, 54, 62, 76



Connolly leather seating areas in Dark Pewter – standard on SSEi and available on SE and SLE with exterior colors 12, 40, 41, 44, 62



EXTERIOR



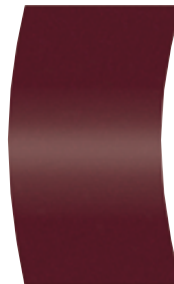
Galaxy Silver
Metallic



Ivory White
40



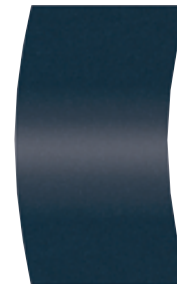
Black
41



Maple Red
Metallic
44



Light Bronzermist
Metallic
54



Midnight Blue
Metallic
62



Dark Bronzermist
Metallic
76