



Nissan Intelligent Mobility moves you one step ahead. In cars that feel like an extension of you, helping you see more and sense more, reacting with you, and sometimes even for you. Nissan Intelligent Mobility is about a better future – moving us to a world that’s safer, more sustainable and exciting.



ROGUE®

ALL-NEW 2021



<sup>1</sup>Driving is serious business and requires your full attention. If you have to use the feature while driving, exercise extreme caution at all times so full attention may be given to vehicle operation. <sup>2</sup>Information displayed is dependent on how vehicle is equipped. <sup>3</sup>Available feature. <sup>4</sup>Availability of features vary by vehicle model year, model, trim level, packaging, and options. Please see Owner's Manual for important feature information. <sup>5</sup>Leather appointments. <sup>6</sup>2021 Fuel Consumption Estimates L/100 km (MPG) – 8.9 (32) City / 7.0 (40) Highway / 8.1 (35) Combined for Rogue FWD; 9.2 (31) City / 7.2 (39) Highway / 8.3 (34) Combined for Rogue AWD. Actual mileage may vary with driving conditions. Use for comparison only. <sup>7</sup>Driving is serious business and requires your full attention. If you have to use the connected device while driving, exercise extreme caution at all times so full attention may be given to vehicle operation. <sup>8</sup>Provincial laws may apply. Review before using. <sup>9</sup>Late availability. Expected availability Fall 2020/Winter 2021. <sup>10</sup>Feature availability is dependent on vehicle model, trim level, packaging and options. Compatible connected device may be required and feature availability may be dependent on device's capability. Refer to connected device's Owner's Manual for details. Late availability for some features. Driving is serious business and requires your full attention. Only use features and connected devices when safe and legal to do so. Some features, including automatic crash notification and SOS, are dependent upon the telematics device being in operative condition, its ability to connect to a wireless network, compatible wireless network availability, navigation map data and GPS satellite signal receptions, the absence of which can limit or prevent the ability to reach Customer Care or receive support. GPS mapping may not be detailed in all areas or reflect current road status. Never program GPS while driving. Only use Remote Engine Start and Remote Horn features in accordance with any laws, rules or ordinances in effect in your vehicle's location. Some services and features are provided by independent companies not within Nissan's control. **Should service provider terminate or restrict service or features, service or features may be suspended or terminated without notice or with no liability to Nissan or its partners or agents.** Services and features may require compatible cellular network provided by independent companies not within Nissan or its partners' or agents' control. Cellular network signal strength may vary and may not be available in all areas or at all times. Services and features may not function if cellular network is unavailable, restricted, or terminated. Nissan and its partners or agents are not responsible for associated costs or other third party changes that may be required for continued operation due to cellular network unavailability, restriction, or termination (including equipment replacements/upgrades, if available, or roaming charges on alternative networks). Technology is evolving, and changes by independent companies are not within Nissan's or its partners' or agents' control. Enrollment, owner consent, personal identification number (PIN), and subscription agreement may be required to receive full suite of features and services. Trial periods (if applicable) begin on the date of vehicle purchase or lease of a new Nissan. Trial periods may be subject to change at any time and may be subject to early termination without notice. Required subscriptions may be sold separately for each available feature or service after trial period ends, and may continue until you call service provider to cancel. Installation costs, one-time activation fee, other fees and taxes may apply. Fees and programming subject to change. Feature may be subject to age restrictions in some areas. Subscriptions governed by service provider's subscription agreement, terms and conditions and privacy statements available at service provider's website. Text rates or data usage may apply. The Nissan names, logos and slogans are trademarks owned by or licenced to Nissan Motor Co. Ltd. or its North American subsidiaries. Other trademarks and trade names are those of their respective owners. **For important safety information, system limitations, and additional operating and feature information, see Dealer or Owner's Manual.** <sup>11</sup>ProPILOT Assist and ProPILOT Assist with Navi-link cannot prevent collisions. It is the driver's responsibility to be in control of the vehicle at all times. Always monitor traffic conditions and keep both hands on the steering wheel. System operates only when lane markings are detected. Does not function in all weather, traffic and road conditions. System has limited control capability and the driver may need to steer, brake or accelerate at any time to maintain safety. See Owner's Manual for safety information. <sup>12</sup>Nissan advanced safety technologies can't prevent all collisions or warn in all situations. See Owner's Manual for important safety information. <sup>13</sup>Intelligent Emergency Braking with Pedestrian Detection cannot prevent all collisions and may not provide warning or braking in all conditions. Driver should monitor traffic conditions and brake as needed to prevent collisions. See Owner's Manual for safety information. <sup>14</sup>Rear Intelligent Emergency Braking cannot prevent all collisions and may not provide warning or braking in all conditions. Driver should monitor traffic conditions and brake as needed to prevent collisions. See Owner's Manual for safety information. <sup>15</sup>Rear Cross Traffic Alert may not detect all vehicles. See Owner's Manual for safety information. <sup>16</sup>Blind Spot Warning and Intelligent Blind Spot Intervention cannot prevent collisions and may not detect every object or warn in all situations. Driver should always turn and look before changing lanes. See Owner's Manual for safety information. <sup>17</sup>Lane Departure Warning and Intelligent Lane Intervention only operate when lane markings are able to be detected. See Owner's Manual for safety information. <sup>18</sup>Intelligent Around View® Monitor cannot eliminate blind spots and may not detect every object. Driver should always turn and check surroundings before driving. See Owner's Manual for safety information. <sup>19</sup>Virtual composite 360° view. <sup>20</sup>Traffic Sign Recognition (TSR) may not detect and read all traffic signs in all conditions. Driver should monitor all traffic signs and obey all traffic laws. <sup>21</sup>Cargo shown for display purposes only. Cargo and load capacity limited by weight and distribution. Always secure cargo. Heavy loading of the vehicle with cargo, especially on the roof, will affect the handling and stability of the vehicle. <sup>22</sup>Intelligent All-Wheel Drive cannot prevent collisions or provide enhanced traction in all conditions. Always monitor traffic and weather conditions. <sup>23</sup>Genuine Nissan Accessory Roof Rail Crossbars have a maximum weight limit of 100 lbs. <sup>24</sup>Extra cost option. <sup>25</sup>Intelligent Forward Collision Warning cannot prevent collisions. See Owner's Manual for safety information. <sup>26</sup>Intelligent Driver Alertness cannot provide a warning in every situation. See Owner's Manual for safety information. <sup>27</sup>See Owner's Manual for safety information. <sup>28</sup>Airbags are only a supplemental restraint system. Always wear your seat belt. Rear-facing child restraints should not be placed in the front-passenger's seat. All children 12 and under should ride in the rear seat properly secured in child restraints, booster seats, or seat belts according to their size. Airbags will only inflate in certain accidents. See Owner's Manual for safety information. <sup>29</sup>Sonar System may not detect every object. Driver should always check surroundings before driving. See Owner's Manual for safety information. <sup>30</sup>Never program while driving. GPS mapping may not be detailed in all areas or reflect current road status. <sup>31</sup>XM® and SiriusXM® Satellite Radio is available in the 10 Canadian provinces and the 48 contiguous United States. Subscription sold separately after trial period. All subscriptions subject to customer agreement at [siriusxm.ca/terms](http://siriusxm.ca/terms). All fees and programming subject to change. ©2020 Sirius XM Canada Inc. The Sirius,® XM,® and SiriusXM® names and all related marks and logos are trademarks of Sirius XM Radio Inc. All other trademarks are the property of their respective owners. <sup>32</sup>Whichever occurs first. <sup>33</sup>Brake Assist cannot prevent all collisions and may not provide warning or braking in all conditions. Driver should monitor traffic conditions and brake as needed to prevent collisions. See Owner's Manual for safety information. <sup>34</sup>RearView Monitor may not detect every object and does not eliminate blind spots or warn of moving objects. See Owner's Manual for safety information. <sup>35</sup>Vehicle Dynamic Control cannot prevent collisions due to abrupt steering, carelessness, or dangerous driving techniques. It should remain on when driving, except when freeing the vehicle from mud or snow. See Owner's Manual for safety information. <sup>36</sup>Intelligent Trace Control cannot prevent collisions or loss of control. Driver should remain in control of vehicle at all times. See Owner's Manual for safety information. <sup>37</sup>Use Hands Free Text Messaging when parked in a safe location. If you must use while driving, monitor traffic conditions and keep both hands on the steering wheel to prevent collisions. Compatible device required. Message and data rates may apply. <sup>38</sup>Availability of specific features is dependent upon the phone's Bluetooth® support. Please refer to your phone Owner's Manual for details. Bluetooth® word mark and logos are owned by Bluetooth SIG, Inc., and any use of such marks by Nissan is under licence. <sup>39</sup>Tire Pressure Monitoring System is not a substitute for regular tire pressure checks. See Owner's Manual for safety information. <sup>40</sup>Vehicle must be on for the Easy-Fill Tire Alert to operate. Android®, Android Auto™, Google, YouTube® and other marks are trademarks of Google LLC. Apple CarPlay®, Apple Music®, Siri® and Siri® Eyes Free are registered trademarks of Apple, Inc. Bose® is a registered trademark of The Bose Corporation. Facebook® is a registered trademark of Facebook, Inc. Instagram® is a registered trademark of Instagram, LLC. Qi® is a registered trademark of IEEE Industry Standards and Technology Organization. The Sirius,® XM,® and SiriusXM® names and all related marks and logos are trademarks of Sirius XM Radio Inc. All other trademarks are the property of their respective owners. THULE is a trademark of Thule Sweden AB. Twitter® is a registered trademark of Twitter, Inc. All illustrations, photographs and specifications in this brochure are based on the latest product information. See actual vehicle for complete accuracy. Nissan Canada Inc. reserves the right to make changes at any time, without notice, in prices, colours, materials, equipment, specifications and models, and to discontinue models or equipment. For information on additional options and accessories, contact your Nissan Dealership. Registered trademarks are property of their respective owners. At [nissan.ca](http://nissan.ca), you'll find a way to "build your own Nissan," a dealer locator, and more information about key Nissan support services. The Nissan names, logos, product names, feature names, and slogans are trademarks owned by or licenced to Nissan Motor Co. Ltd. and/or its North American subsidiaries. **Always wear your seat belt, and please drive responsibly.** ©2020 Nissan Canada Inc. All rights reserved. Printed in September 2020. Catalogue number: **99999-ROG21EN**.



Spirited and refined,  
capable of crossing over  
into every aspect of your life

Whether it's exploring a city's secret spots or driving to the mountains on a whim, the all-new 2021 Rogue® is up for whatever you are. Tap into your surroundings with nearly one metre of digital displays.<sup>1,2,3</sup> Balance your life with premium comfort. Manoeuvre around most any unexpected situation with driver assistance technologies.<sup>4</sup> This is a side of you that takes everyone by surprise. This is the all-new 2021 Nissan Rogue.



Nissan Rogue® Platinum AWD shown in Two-tone Super Black / Boulder Grey Pearl.





## Three genius displays, so many pixels to play with

Start with a large head-up display in the upper left corner, then drop your gaze to the digital dashboard — 312 mm (12.3") of vibrant data right behind the steering wheel.<sup>1,2,3</sup> The third 229 mm (9") touch-screen display sits just to the right.<sup>3</sup> Together, they offer nearly one metre of digital information, allowing you to configure the all-new Rogue® to what you need in the moment. Now look again. See how each display is positioned to give you the info you want? This is customization pixel by pixel.



**What do you want to see?** With the customizable digital dashboard, you can choose the information that's most important to you.<sup>1,2,3</sup> Easily toggle from full-colour maps to music to fuel economy with a push of a button.<sup>6</sup> Or move the gauges to the side and put what's important front and centre. When you can quickly access the situation, you can stay more focused on your drive – and your next adventure.



## Room for five, space for even the biggest personalities

Pick your seat and relax. Building a crossover from the ground up is about more than premium amenities. It's about designing an experience, where family and friends feel welcome and any size personality fits in. So enjoy the soft semi-aniline leather appointments,<sup>3</sup> the rear USB ports,<sup>3,7</sup> and the universal pleasure of Tri-Zone Automatic Temperature Control.<sup>3</sup> Revel in the Remote Engine Start System that takes comfort to new heights with the ability to heat or cool the cabin from up to 60 metres away.<sup>3,8</sup> And indulge everyone with the breathtaking view from the Dual Panel Panoramic Moonroof.<sup>3</sup>

• Tri-Zone Automatic Temperature Control<sup>3</sup>

• Butterfly centre console

• Heated Front and Rear Seats<sup>3</sup>

• Quilted Semi-aniline Leather-appointed Seats<sup>3</sup>



**You heard it here first.** Bose, a leader in high-fidelity sound systems and a long-time Nissan partner, designed a highly customized listening experience for the all-new Rogue.<sup>®</sup> Based on proprietary design and the acoustical analysis of the cabin, Bose brings the power of sound to every seat.<sup>3</sup>

Nissan Rogue<sup>®</sup> Platinum AWD shown in Charcoal Quilted Semi-aniline Leather.<sup>5</sup> U.S. instrumentation shown.





### Smarter phone connectivity

**Wireless Apple CarPlay® integration<sup>9</sup>** People to see? Places to be? Just ask Siri.® Equipped with Siri® voice control, Apple CarPlay® brings your contacts, favourite messaging apps, Apple Music® playlists, Apple Maps, and more on board to your Rogue.® No need to plug-in. Your world is now freed from wires.<sup>3,7,10</sup>



**Wireless charging** Power your phone on the go. Place your Qi®-compatible smartphone on the wireless charging pad located in front of the shifter, and the all-new Rogue does the rest. Your old cord is now officially obsolete.<sup>3,7</sup>



U.S. instrumentation shown.



### New ProPILOT Assist with Navi-link

You may not know what's ahead but with ProPILOT Assist with Navi-link, the all-new Rogue is on it.<sup>3,11</sup>

ProPILOT Assist helps you navigate stop-and-go highway traffic while helping to keep you centred in your lane.<sup>3,11</sup> A stress-reducer? Absolutely. Opt for the new ProPILOT Assist with Navi-link and the concept of hassle-free driving rises to a new level.<sup>3,11</sup>

By utilizing highway mapping, ProPILOT Assist with Navi-link is able to “read the road.” What it does with that information gives you a totally new perspective.<sup>3,11</sup>

- Helps smooth the way for upcoming turns, junctions, and off-ramps by adjusting your speed
- Can track posted speed limits with the ability to alter your set speed accordingly



## Standard Safety Shield® 360

Imagine feeling confident in most any situation. With a suite of standard Safety Shield 360 technologies, the all-new Rogue® can look out for you all around.<sup>12</sup> This is peace of mind you can enjoy, mile after mile.<sup>4,12</sup>



INTELLIGENT EMERGENCY  
BRAKING WITH  
PEDESTRIAN DETECTION<sup>13</sup>



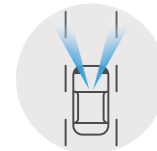
REAR INTELLIGENT  
EMERGENCY BRAKING<sup>14</sup>



REAR CROSS  
TRAFFIC ALERT<sup>15</sup>



BLIND SPOT  
WARNING<sup>16</sup>



LANE DEPARTURE  
WARNING<sup>17</sup>



HIGH BEAM  
ASSIST

**Intelligent Around View® Monitor** Win at parking. It may seem unfair to have a bird's-eye view to help guide you into your spot. But believe us, it's a definite advantage. Four cameras give you a virtual composite 360° view from above, helping you see what's around your crossover in a whole new way. Select from split-screen close-ups of the front, rear and curbside views to help you smoothly manoeuvre into a parking space.<sup>3,18,19</sup>



**Traffic Sign Recognition** Stay on top of speed limits. Traffic Sign Recognition keeps you up to date by detecting road signs as you go by.<sup>3,20</sup>

## Divine intervention, engineered

### SAFETY AND DRIVER ASSIST FEATURES

**Intelligent Blind Spot Intervention** If a warning isn't enough, and Rogue determines that you're attempting to change lanes when there is a vehicle detected, it can gently apply the brakes to help move you back to the safety of your lane.<sup>3,16</sup>

**Intelligent Lane Intervention** Stay between the lines. When lane markings are clear, Intelligent Lane Intervention can detect if you're straying out of your lane and can tap the brakes to help gently guide you back.<sup>3,17</sup>



## Technology that looks out for others

**Intelligent Emergency Braking with Pedestrian Detection** Monitors your speed and distance between you and the car ahead, and can let you know if you need to slow down. It can also automatically engage the brakes to help avoid a frontal collision or lessen the severity of an impact. And when it detects a pedestrian or cyclist in the crosswalk, it can stop you in your tracks.<sup>13</sup>



## Technology that watches your back

**Rear Intelligent Emergency Braking** Trash pickup days can be an obstacle course. Not to worry. Rogue also watches out behind you for stationary items you might not see. It detects an item, and if you fail to stop, it can automatically engage the brakes.<sup>14</sup>

**Rear Cross Traffic Alert** Fear no parking lot. When you're backing out of a space, Rear Cross Traffic Alert watches behind Rogue and can warn you about cars it detects creeping up on you from either side.<sup>15</sup>







Family mode made easier

Amplify the parenting experience with kid-centred functionality.

**Rear doors open almost 90°.** Many of our competitors don't. Every extra degree of room makes it that much easier for you to secure the wiggliest of babies in a car seat.<sup>21</sup>

**Lower rear door sills** are adjusted inward so you can stand closer to the interior and easily reach inside.<sup>21</sup>

**Dedicated lower anchors** in the rear seat allow you to put a child seat in any seating position, including the middle – no locking clip needed.<sup>21</sup>

Unexpected cargo flexibility

The best experiences are always unplanned and memorable. Kick your foot under the rear bumper and the Motion Activated Liftgate opens to reveal a generous cargo area.<sup>3,21</sup>

How you configure the interior is just as memorable. With the Divide-N-Hide® cargo system, a set of adjustable dividers gives you six different configurations. You can construct everything from a private storage area to a series of layered shelves. So get in there and mix it up.<sup>3,21</sup>



Want even more space? It's as easy as pulling a lever in the cargo area and watching the rear seats fold down to take in every experience.<sup>3,21</sup>



Standard tonneau cover not shown.



**Under-shifter Storage** Find innovative design in a place you'd least expect – but most appreciate. Like an open space under the electronic shifter that keeps go-to items from rolling around.<sup>21</sup>



**Butterfly Armrest** Open the centre console from the sides instead of the top. Easily pass tissues, toys, even hidden treasures to your rear passengers.<sup>21</sup>



## Dial in adventure

Meet Nissan's most capable Rogue® yet. An all-new Intelligent All-Wheel Drive with Terrain Selector and direct coupling reacts quicker than ever to help enhance stability and traction.<sup>3,22</sup> Every day presents a different opportunity, so turn the dial and head out. Your instincts will lead the way.

**Off-Road Mode (AWD only)** From gravel to sand to dirt, Off-Road Mode is uniquely tuned to help you get up to speed. By balancing the transmission and throttle response, the all-new Rogue tailors your all-terrain experience for maximum confidence.<sup>3</sup>

**Snow Mode (AWD only)** If one of your favourite routes has fresh powder, Snow Mode is engineered to help you still make fresh tracks. It knows to back off on the throttle and shift to a higher gear ratio, helping you stay in control.<sup>3</sup>

**Auto Mode** The choice for everyday driving – Auto Mode automatically adjusts for balanced performance. On a road trip and want the ease of cruise control? Stay in Auto Mode and enjoy a more comfortable drive. As the default mode, you don't have to do anything to activate Auto Mode. Just push the Start/Stop button and go. Auto Mode takes care of the rest.

**Eco Mode** Like its name implies, Eco Mode is engineered to help boost fuel economy. When selected, engine and Xtronic CVT® (Continuously Variable Transmission) controls change to help you drive as efficiently as possible.

**Sport Mode** The fun starts here, especially if you're about to take on a series of curves. Dial up Sport Mode and the all-new Rogue responds with tighter steering and sharper throttle response. You respond with growing confidence and huge grins as you enter every twist and turn.



**Nissan Rogue® Platinum AWD** shown in Two-tone Super Black / Pearl White TriCoat shown with standard Splash Guards, available accessory Rear Underbody Trim, Roof Rail Crossbars,<sup>3,21,23</sup> and bike rack. See dealer for available options.



CHOOSE YOUR COLOUR



Glacier White QAK



Pearl White TriCoat²⁴ QAB



Boulder Grey Pearl²⁴\* KBY

	S	SV	PLATINUM
CHARCOAL CLOTH	■		
CHARCOAL PRIMA-TEX™ LEATHERETTE			
LIGHT GREY PRIMA-TEX™ LEATHERETTE			
CHARCOAL SEMI-ANILINE LEATHER⁵			■
TAN SEMI-ANILINE LEATHER⁵			

S	SV	PLATINUM
	■	
	P	
	P	
		■

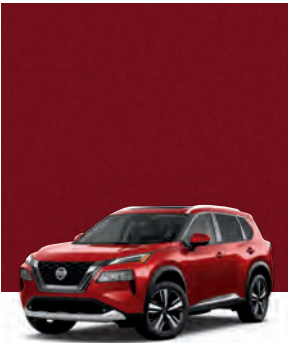
S	SV	PLATINUM
	P	



Gun Metallic²⁴ KAD



Super Black KH3



Scarlet Ember Tintcoat²⁴ NBL



Caspian Blue Metallic²⁴\* RBY



Super Black Roof / Pearl White TriCoat²⁴ Body (XBJ)

S	SV	PLATINUM
■	■	
	P	
		■

S	SV	PLATINUM
■	■	
	P	
		■

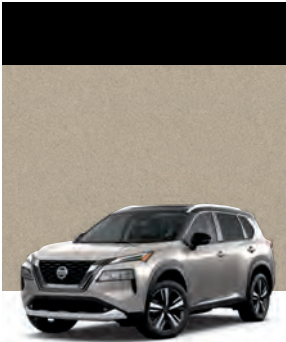
S	SV	PLATINUM
■	■	
	P	
	P	
		■
		■

S	SV	PLATINUM
	■	
	P	
	P	

S	SV	PLATINUM
		■



Super Black Roof / Boulder Grey Pearl²⁴ Body (XEX)



Super Black Roof / Champagne Silver Metallic²⁴ Body (XEW)



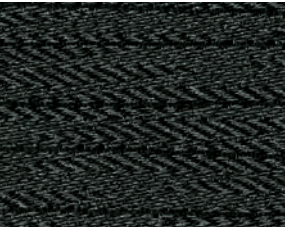
Super Black Roof / Caspian Blue Metallic²⁴ Body (XEU)

	S	SV	PLATINUM
CHARCOAL CLOTH			
CHARCOAL PRIMA-TEX™ LEATHERETTE			
LIGHT GREY PRIMA-TEX™ LEATHERETTE			
CHARCOAL SEMI-ANILINE LEATHER⁵			■
TAN SEMI-ANILINE LEATHER⁵			■

S	SV	PLATINUM
		■

S	SV	PLATINUM
		■
		■

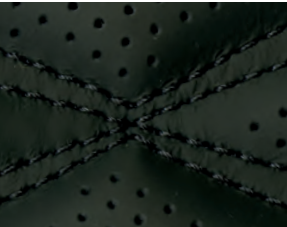
CHOOSE YOUR INTERIOR



Charcoal Cloth  
S|SV



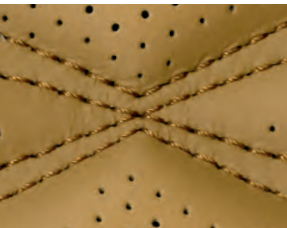
Charcoal Prima-Tex™  
Leatherette  
SV Premium Package



Charcoal Semi-aniline Leather⁵  
Platinum



Light Grey Prima-Tex™  
Leatherette  
SV Premium Package



Tan Semi-aniline Leather⁵  
Platinum

- Standard
- P Part of Premium Package

Nissan has taken care to ensure that the colour swatches presented here are the closest possible representations of actual vehicle colours. Swatches may vary slightly due to the printing process and whether viewed in daylight, fluorescent or incandescent light. Please see the actual colours at your dealer.

\* U.S. model shown.



## CHOOSE YOUR TRIM LEVEL

- 2.5-litre Direct Injection Gasoline™ (DIG) 4-cylinder engine with 181 HP and 181 lb.-ft. of torque
- Available Intelligent All-Wheel Drive with Terrain Selector<sup>22</sup>
- Off-Road and Snow Mode (AWD models only)
- Intelligent Forward Collision Warning<sup>25</sup>
- Intelligent Emergency Braking with Pedestrian Detection<sup>13</sup>
- Lane Departure Warning<sup>17</sup>
- Blind Spot Warning<sup>16</sup>
- Rear Cross Traffic Alert<sup>15</sup>
- Rear Intelligent Emergency Braking<sup>14</sup>
- High Beam Assist
- Intelligent Driver Alertness<sup>26</sup>
- 17" Aluminum-alloy wheels
- LED headlights with LED Daytime Running Lights
- LED taillights
- Heated outside mirrors with LED turn signal indicators
- Privacy glass
- Dual Zone Automatic Temperature Control
- Rear Door Alert<sup>27</sup>
- Integrated Key with remote keyless entry and Push Button Ignition
- Leather-wrapped steering wheel
- Heated front seats
- Heated steering wheel
- Advanced Drive-Assist® Display<sup>1,2</sup>
- NissanConnect® 203 mm (8") touch-screen display<sup>1</sup>
- Apple CarPlay® integration<sup>10</sup>
- Android Auto™<sup>10</sup>
- Nissan Advanced Airbag System<sup>28</sup>



**SV** INCLUDES S EQUIPMENT PLUS:

- ProPILOT Assist<sup>11</sup>
- Intelligent Lane Intervention<sup>17</sup>
- Intelligent Blind Spot Intervention<sup>16</sup>
- Intelligent Around View<sup>®</sup> Monitor<sup>18</sup>
- 18" Aluminum-alloy wheels
- Roof rails<sup>21</sup>
- Dual Panel Panoramic Moonroof
- Nissan Intelligent Key<sup>®</sup> with Push Button Ignition
- Remote Engine Start System with Intelligent Climate Control<sup>8</sup>
- 8-way power driver's seat, with 2-way power lumbar support
- NissanConnect<sup>®</sup> Services powered by SiriusXM<sup>®</sup> with trial access to 5-year Plus and 6-month Premium package<sup>8,10</sup>
- Wi-Fi Hotspot<sup>10</sup>
- AM/FM audio system with six speakers
- Two USB ports and two USB-C ports<sup>7</sup>

**AVAILABLE PACKAGE:**

- Premium Package



PLATINUM	INCLUDES SV AWD EQUIPMENT PLUS:
<ul style="list-style-type: none"> <li>• ProPILOT Assist with Navi-link<sup>11</sup></li> <li>• Front and Side Sonar System<sup>29</sup></li> <li>• Traffic Sign Recognition<sup>20</sup></li> <li>• 19" Aluminum-alloy wheels</li> <li>• LED fog lights</li> <li>• Motion Activated Liftgate</li> <li>• Tri-Zone Automatic Temperature Control</li> <li>• Rear sunshades</li> <li>• Outside mirrors with reverse tilt-down feature</li> <li>• Interior accent lighting</li> <li>• Divide-N-Hide® cargo system<sup>21</sup></li> <li>• 4-way power front-passenger's seat</li> <li>• Memory System - driver's seat and outside mirrors</li> <li>• Quilted Semi-aniline leather-appointed seats</li> </ul>	<ul style="list-style-type: none"> <li>• Heated rear seats</li> <li>• Digital dashboard with fully digital gauges<sup>1,2</sup></li> <li>• NissanConnect® 229 mm (9") touch-screen display<sup>1</sup></li> <li>• Nissan Door to Door Navigation with Premium Traffic<sup>30</sup></li> <li>• Head-Up Display</li> <li>• Wireless Apple CarPlay® integration<sup>9,10</sup></li> <li>• SiriusXM® Traffic and Travel Link® with 3-month trial subscription<sup>31</sup></li> <li>• Bose Premium Audio System, including dual-driver woofer</li> <li>• Wireless charger<sup>7</sup></li> </ul>



## CHOOSE YOUR PACKAGE

SV AWD	PREMIUM PACKAGE
<ul style="list-style-type: none"> <li>▪ Power liftgate</li> <li>▪ Rear sunshades</li> </ul>	<ul style="list-style-type: none"> <li>▪ Prima-Tex™ Leatherette-appointed seats</li> <li>▪ Heated rear seats</li> </ul>



## BUYING AND OWNING

**Finance Options** Through Nissan Canada Finance, we offer many attractive lease and loan options that can be tailored to your individual needs. We have unique programs such as the Nissan Grad Program, Loyalty Program or the Nissan Advantage Program. Please visit our website **[Nissan.ca/finance](https://www.nissan.ca/finance)** to explore all of the options available. We have also made it easy to pre-qualify online. All of our programs come with competitive rates and terms. With our flexible options, driving home a new Nissan has never been easier. Consult your local Nissan Dealership for complete details.

**No-Nonsense Warranty** Every 2021 Nissan is covered by a 3 year/60,000 km<sup>32</sup> Comprehensive New Vehicle Warranty, a 5 year/100,000 km<sup>32</sup> Powertrain Warranty, an 8 year/130,000 km<sup>32</sup> Emission OBD Warranty on selected components, and a 5 year/unlimited km Corrosion Perforation Warranty. As a Nissan owner, you'll also receive a 3 year Roadside Assistance program available to you 24 hours a day. Terms, conditions and exclusions apply. See your Warranty Information Booklet for complete details.

**Added Security Plan (ASP)** For ultimate peace of mind, consider the Nissan Added Security Plan. It's our commitment to be there for you, and to help you leave your worries behind. Different plans, available for both purchased and leased vehicles, let you tailor the coverage to your driving habits.

**Security+Plus™ Prepaid Maintenance Plan** The smart choice when it comes to maintaining your new Nissan. Honoured at all participating Nissan Dealers in Canada and the U.S., your vehicle is cared for by factory-trained technicians using Genuine Nissan Parts. And best of all, there's no worrying about price increases on parts or service in the future. A variety of plans are available. Ask your Dealer for details.

Images may show additional available equipment.



CHOOSE YOUR ACCESSORIES



- A. Interior Accent Lighting**  
Set the mood with a range of colours in the front, rear and cup holders.
- B. Pet Divider**  
Keep your pet secure behind 2nd-row seats.
- C. Chrome Rear Bumper Protector**  
Protect your bumper from dings and scratches in style.
- D. Illuminated Kick Plates**  
For a grand entry, every time.
- E. Cargo Area Seatback Protector<sup>21</sup>**  
Guard against dirt and scuff marks when loading bikes and gear.
- F. Wireless Smartphone Charger<sup>7</sup>**  
Your charging cord is officially obsolete.
- G. Molded All-Season Floor Mats**  
Stepping inside from the rain or snow? No problem.
- H. Cargo Net<sup>21</sup>**  
The easy solution to bringing more.

Additional Accessories:

- Carpeted Floor Mats
- Cargo Area Protector<sup>21</sup>
- Dual USB Rear Charging Ports<sup>7</sup>
- Remote Engine Start System<sup>8</sup>
- Roof Rail Crossbars<sup>23</sup>
- LED Fog Lights
- Clear Film Hood Protector
- Hood Wind Deflector
- Clear Door Edge Protectors
- Hatch Tent
- Cargo Blocks/Stabilizers<sup>21</sup>
- Portable Cargo Organizer<sup>21</sup>
- Impact Sensor
- Nissan Chrome Licence Plate Frame
- Nissan Valve Stem Caps (4-piece set)
- Seat Cover with Storage
- Cargo box by Thule<sup>®21</sup>
- Bike carrier by Thule<sup>®</sup>
- Kayak carrier by Thule<sup>®</sup>
- And More

See your Nissan dealer for details, or go to [accessories.nissan.ca](https://accessories.nissan.ca)

GENUINE NISSAN ACCESSORIES

Turn brand-new into all you

Every Genuine Nissan Accessory is custom-fit, custom-designed and durability-tested. Each one is backed by Nissan's 3-year/60,000-km (whichever occurs first) limited warranty (if installed by dealer at the time of purchase), and can be financed when installed by dealer at time of purchase. Terms, conditions, and exclusions apply. See your Warranty Information Booklet for complete details.



Left: **Nissan Rogue® Platinum AWD** shown in Two-tone Super Black / Champagne Silver Metallic with Standard Splash Guards, Exterior Ground Lighting, Side-Window Deflectors, Black Rear Bumper Protector, Rear Underbody Trim, and Roof Rail Crossbars.<sup>21,23</sup>

Right: **Nissan Rogue® Platinum AWD** shown in Two-tone Super Black / Caspian Blue with Standard Splash Guards, LED Fog Lights (standard on Platinum), Exterior Ground Lighting, Hood Deflector, Side-Window Deflectors, Front Underbody Trim, and Roof Rail Crossbars.<sup>21,23</sup>



SPECIFICATIONS

Engine	S	SV	PLT
2.5-litre DOHC 16-valve Direct Injection Gasoline™ (DIG) 4-cylinder engine	■	■	■
...Horsepower – 181 HP @ 6,000 rpm	■	■	■
...Torque – 181 lb.-ft. @ 3,600 rpm	■	■	■
Continuously Variable Valve Timing Control System (CVTCS)	■	■	■
Direct Injection Gasoline (DIG)	■	■	■

Drivetrain			
Front engine/Front-Wheel Drive	■	■	
Intelligent All-Wheel Drive with Terrain Selector (AWD) <sup>23</sup>	□	□	■
Xtronic CVT® (Continuously Variable Transmission) with Manual Mode	■	■	■
Electronic shifter	■	■	■
Paddle shifters	■	■	■
Eco and Sport Modes	■	■	■
Snow and Off-Road Modes	□	□	■

Brakes			
Front and rear vented disc brakes	■	■	■
4-wheel Anti-lock Braking System (ABS)	■	■	■
Electronic Brake force Distribution (EBD)	■	■	■
Brake Assist <sup>33</sup>	■	■	■
Electronic parking brake	■	■	■

Suspension/Steering			
Independent strut front suspension	■	■	■
Independent multi-link rear suspension	■	■	■
Front and rear stabilizer bars	■	■	■

Driver Assistance Technologies			
Cruise control	■		
ProPILOT Assist <sup>31</sup>		■	
ProPILOT Assist with Navi-link <sup>31</sup>			■
Intelligent Forward Collision Warning <sup>25</sup>	■	■	■
Intelligent Emergency Braking with Pedestrian Detection <sup>13</sup>	■	■	■
Lane Departure Warning <sup>17</sup>	■	■	■
Intelligent Lane Intervention <sup>17</sup>		■	■
Blind Spot Warning <sup>16</sup>	■	■	■
Intelligent Blind Spot Intervention <sup>16</sup>		■	■
Rear Cross Traffic Alert <sup>15</sup>	■	■	■
RearView Monitor <sup>24</sup>	■	■	■
Intelligent Around View® Monitor <sup>18</sup>		■	■
Rear Sonar System <sup>29</sup>	■	■	■
Front and Side Sonar System <sup>29</sup>		■	■
Rear Intelligent Emergency Braking <sup>14</sup>	■	■	■
High Beam Assist	■	■	■
Vehicle Dynamic Control (VDC) with Traction Control System (TCS) <sup>35</sup>	■	■	■
Intelligent Trace Control <sup>16</sup>	■	■	■
Active Ride Control	■	■	■
Hill start assist	■	■	■
Automatic Brake Hold	■	■	■
Intelligent Driver Alertness <sup>26</sup>	■	■	■
Traffic Sign Recognition <sup>20</sup>			■

Wheels/Tires			
17" Aluminum-alloy wheels	■		
18" Aluminum-alloy wheels		■	
19" Aluminum-alloy wheels			■
P235/65R17 All-season tires	■		
P235/60R18 All-season tires		■	
P235/55R19 All-season tires			■


Exterior Features	S	SV	PLT
Intelligent Auto Headlights	■	■	■
LED headlights with LED Daytime Running Lights	■	■	■
LED taillights	■	■	■
LED fog lights			■
Dual power outside mirrors	■	■	■
Heated outside mirrors with LED turn signal indicators	■	■	■
Roof rails <sup>21</sup>		■	■
Rear spoiler	■	■	■
Power Liftgate		P	
Motion Activated Liftgate			■
Dual Panel Panoramic Moonroof		■	■
UV-reducing solar glass		■	■
Rear privacy glass	■	■	■

Comfort/Convenience			
Dual Zone Automatic Temperature Control	■	■	
Tri-Zone Automatic Temperature Control			■
Rear passenger vents	■	■	■
Rear Door Alert <sup>27</sup>	■	■	■
Rear sunshades		P	■
Power windows with driver’s one-touch auto-up/down feature	■	■	■
Power door locks with auto-locking feature	■	■	■
Integrated Key with remote keyless entry and Push Button Ignition	■		
Nissan Intelligent Key® with Push Button Ignition		■	■
Remote Engine Start System with Intelligent Climate Control <sup>8</sup>		■	■
Tilt and telescoping steering column	■	■	■
Outside mirrors with reverse tilt-down feature			■
Interior accent lighting			■
Variable intermittent flat-blade windshield wipers	■	■	■
Intermittent rear window wiper	■	■	■
Two 12-volt DC power outlets	■	■	■
Sun visors with illuminated vanity mirrors	■	■	■
Overhead map lights	■	■	■
Four cup holders	■	■	■
Four bottle holders	■	■	■
Front seatback pockets		■	■
Four cargo tie-down hooks <sup>21</sup>	■	■	■
Tonneau cover	■	■	■
Divide-N-Hide® cargo system <sup>21</sup>			■

Seating/Appointments			
6-way manual driver’s seat, with 2-way power lumbar support	■		
8-way power driver’s seat, with 2-way power lumbar support		■	■
4-way manual front-passenger’s seat	■	■	
4-way power front-passenger’s seat			■
Memory System – driver’s seat and outside mirrors		■	■
60/40-split folding rear seat	■	■	■
Remote folding rear seats			■
Cloth seat trim	■	■	
Prima-Tex™ Leatherette-appointed seats		P	
Quilted Semi-aniline leather-appointed seats			■
Leather-wrapped steering wheel	■	■	■
Heated front seats	■	■	■
Heated rear seats		P	■
Heated steering wheel	■	■	■

Infotainment	S	SV	PLT
178 mm (7") Advanced Drive-Assist® Display <sup>1,2</sup>	■	■	
312 mm (12.3") Digital dashboard with fully digital gauges <sup>1,2</sup>			■
NissanConnect® 203 mm (8") touch-screen display <sup>1</sup>	■	■	
NissanConnect® 229 mm (9") touch-screen display <sup>1</sup>			■
Nissan Door to Door Navigation with Premium Traffic <sup>30</sup>			■
274 mm (10.8") Head-Up Display			■
Voice Recognition <sup>30</sup>	■	■	■
NissanConnect® Services powered by SiriusXM® with trial access to 5-year Plus and 6-month Premium package <sup>8,10</sup>		■	■
Apple CarPlay® Integration <sup>10</sup>	■	■	■
Wireless Apple CarPlay® Integration <sup>310</sup>			■
Android Auto™ <sup>10</sup>	■	■	■
Wi-Fi Hotspot <sup>10</sup>		■	■
SiriusXM® Traffic and Travel Link® with 3-month trial subscription <sup>31</sup>			■
Hands-free Text Messaging Assistant <sup>37</sup>	■	■	■
Bluetooth® Hands-free Phone System <sup>38</sup>	■	■	■
AM/FM audio system with four speakers	■		
AM/FM audio system with six speakers		■	
Bose Premium Audio System, including dual-driver woofer			■
One USB port and one USB-C port <sup>7</sup>	■		
Two USB ports and two USB-C ports <sup>7</sup>		■	■
Wireless charger <sup>7</sup>			■
Streaming Audio via Bluetooth® <sup>138</sup>	■	■	■
SiriusXM® Radio with 3-month trial subscription <sup>31</sup>	■	■	■

Safety/Security			
Nissan Advanced Airbag System with dual-stage supplemental front airbags with seat belt and occupant-classification sensors <sup>28</sup>	■	■	■
Seat-mounted side-impact supplemental airbags for front- and rear-seat outboard occupants <sup>28</sup>	■	■	■
Driver seat-mounted front-centre supplemental airbag <sup>28</sup>			■
Driver and front-passenger supplemental knee airbags <sup>28</sup>	■	■	■
Roof-mounted curtain supplemental airbags with rollover sensor for outboard occupant head protection for all rows <sup>28</sup>	■	■	■
3-point ALR/ELR passenger seat belt system (ELR for driver)	■	■	■
Front and rear seat belts with double pretensioners and load limiters	■	■	■
LATCH System (Lower Anchors and Tethers for CHildren)	■	■	■
Zone Body construction with front and rear crumple zones and reinforced passenger compartment	■	■	■
Hood buckling creases and safety stops	■	■	■
Break-away engine mounts	■	■	■
Energy-absorbing steering column	■	■	■
Slide-away brake pedal assembly	■	■	■
Knee bolsters	■	■	■
Side-door guard beams	■	■	■
Tire Pressure Monitoring System (TPMS) with Easy-Fill Tire Alert <sup>39,40</sup>	■	■	■
Nissan Vehicle Immobilizer System	■	■	■
Vehicle Security System		■	■

 <b>Premium Package</b>
• Power liftgate • Rear sunshades • Prima-Tex™ Leatherette-appointed seats • Heated rear seats

■ Standard   □ Optional   **P** Part of SV with Premium Package

Nissan's environmental action plan focuses on several key areas. In addition to increasing production of Zero Emission vehicles like the 100% electric LEAF®, we're improving fuel efficiency across our lineup, and reducing the environmental impact of manufacturing through energy-efficient practices in our plants.



DIMENSIONS/CAPACITIES/WEIGHTS/FUEL

Exterior Dimensions – mm (inches)	
Wheelbase	2706 (106.5)
Overall length	4648 (183)
Overall width	1840 (72.4)
Overall height	1689 (66.5)
Track width (front)	1585 (62.4)
Track width (rear)	1590 (62.6)

Interior Dimensions – mm (inches)	
Head room without moonroof (front)	1044 (41.1)
Head room with moonroof (front)	995 (39.2)
Head room without moonroof (rear)	996 (39.2)
Head room with moonroof (rear)	960 (37.8)
Leg room (front)	1100 (43.3)
Leg room (rear)	978 (38.5)
Hip room (front)	1374 (54.1)
Hip room (rear)	1356 (53.4)
Shoulder room (front)	1450 (57.1)
Shoulder room (rear)	1420 (55.9)
Maximum cargo length with rear seats upright	934 (36.8)
Maximum cargo length with rear seats folded down	1828 (72)
Maximum cargo width	1092 (43)
Maximum cargo height	869 (34.2)

Capacities	
Seating capacity	5
Interior passenger volume without moonroof – L (cu. ft.)	2985 (105.4)
Interior passenger volume with moonroof – L (cu. ft.)	2843 (100.4)
Cargo capacity without moonroof – L (cu. ft.) <sup>21</sup>	2098 (74.1)
Cargo capacity with moonroof – L (cu. ft.) <sup>21</sup>	2064 (72.9)
Fuel tank – L (Imp gal.)	54.9 (12.1)

Curb Weights – kg (Lbs.)			
Base Total	S	SV	Platinum
FWD	1536 (3386)	1553 (3424)	-
AWD	1592 (3510)	1608 (3545)	1653 (3644)

2021 Fuel Consumption Estimates – L/100 km (MPG) <sup>4</sup>			
	S	SV	Platinum
City (FWD)	8.9 (32)	8.9 (32)	-
Hwy (FWD)	7 (40)	7 (40)	-
Combined (FWD)	8.1 (35)	8.1 (35)	-
City (AWD)	9.2 (31)	9.2 (31)	9.2 (31)
Hwy (AWD)	7.2 (39)	7.2 (39)	7.2 (39)
Combined (AWD)	8.3 (34)	8.3 (34)	8.3 (34)

...Actual mileage may vary with driving conditions – use for comparison only.

## NISSAN ROGUE®

Isn't it time you were passionate about the vehicle you drive?  
Welcome to the 2021 Rogue.

Follow Nissan Canada on:

