



PONTIAC
VIBE



FEEL SPONTANEOUS

2006



PONTIAC
VIBE



FEEL SPONTANEOUS

WHATEVER LIFE'S GOT IN STORE FOR YOU, VIBE IS UP FOR IT. With its trim size and tight turning circle, Vibe fits into city traffic and tight urban parking spaces with ease. And when it's time to get out of town, you, your friends and your gear fit just as easily into Vibe, thanks to one of the most versatile interiors around.

Vibe handles the seasons, with an available AWD model that lets you laugh at bad weather. And speaking of handling, Vibe is right there for you when you feel like pushing the envelope on your favourite country road. Every model features the precision and responsiveness of rack-and-pinion steering and an agile, finely tuned suspension.

Life isn't one thing. It's everything. Get it all. Get the Vibe.

For more information about Vibe, visit our Web site at vibe.gmcanada.com



VIBE GT

THE INTENSITY IS DIALED WAY UP. Vibe GT is every bit as versatile as the other members of this very accommodating family. The only difference? Vibe GT adds a serious increase in driving excitement. There's a high-revving, high-tech 164 horsepower 1.8 litre engine under the hood, paired with a slick-shifting 6-speed manual transmission that puts you in precise control of all the excitement. Vibe GT stops as well as it goes, too, thanks to standard 4-wheel disc brakes with ABS. It all makes for one intense ride.



164 HP 1.8L DOHC L4 VVTL-i

In technology and tuning, the Vibe GT engine is closer to a race car powerplant than it is to the average compact car engine. Valve timing and lift are both adjusted as engine speeds rise and fall, to ensure maximum efficiency in all situations.

6-SPEED MANUAL

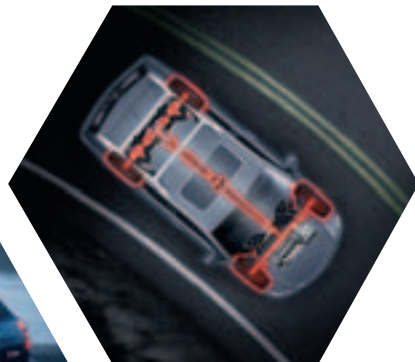
To make optimal use of the Vibe GT engine's performance potential, a 6-speed manual is the only transmission offered. Its light, positive feel will have you making smooth, lightning-fast gear changes.





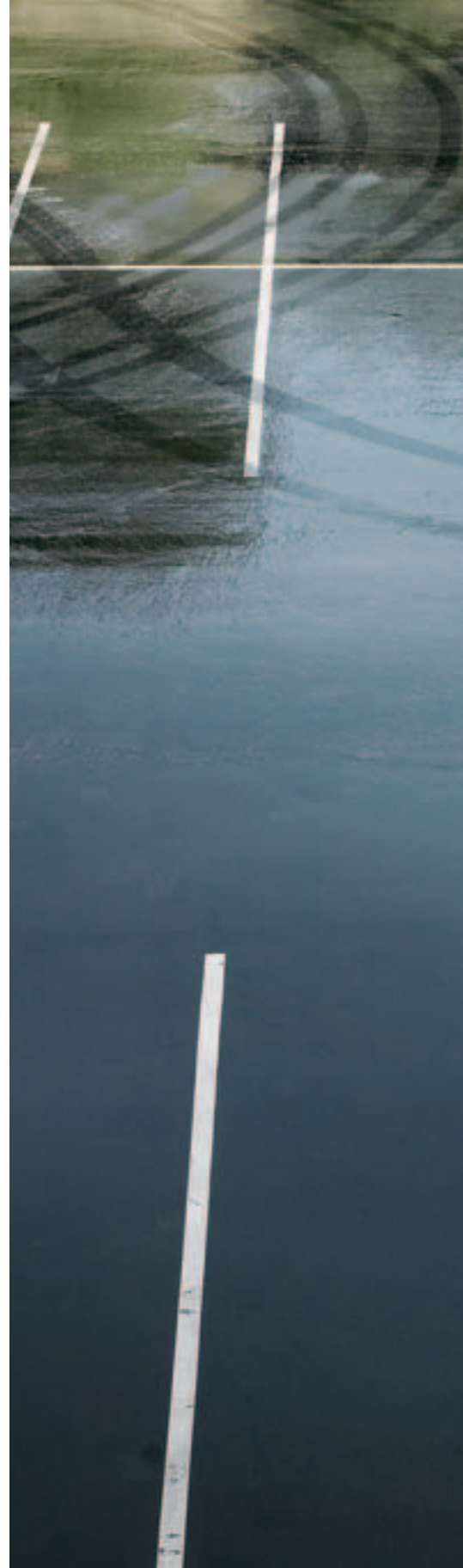
VIBE AWD

GET A GRIP. Remember that white-knuckled drive to your friend's ski chalet? Vibe AWD can help make it a thing of the past, thanks to a sophisticated all-wheel-drive system that gives you an added measure of confidence and control in low-traction situations. In normal driving, nearly all its engine power goes to the front wheels. But if a front wheel starts to spin, the system automatically redistributes power to the wheels that still have traction. Bottom line: Vibe AWD helps you keep moving when other vehicles can't. And that's a good feeling.



Vibe AWD features a sophisticated all-wheel-drive system that distributes power to all 4 wheels, when necessary, via a viscous coupling. You enjoy normal front-wheel-drive road manners on dry pavement, along with the surefooted control of all-wheel drive when traction is scarce.

Vibe AWD features a standard anti-lock braking system (ABS). Any time the system senses wheel lockup under braking, it steps in and automatically begins pumping the brakes to help restore steering control. As a result, you can often avoid hazards you might otherwise have skidded into.





VIBE

LIFE ISN'T ONE-DIMENSIONAL. NEITHER IS VIBE. In an ever-changing world, Vibe has what it takes to rise to the occasion – and to help you get the very most out of it. There's room for five inside, so it's a snap to take friends and family along for the ride. The interior is also highly versatile, with a divided 60/40 rear seat that folds flat and a folding front-passenger seat, so it reconfigures in seconds when you have long or bulky cargo to carry. Of course, no matter who or what you have on board, Vibe always rewards you with an exhilarating driving experience. Because life's too short to drive boring cars.

Vibe provides the information you need, when you need it, via an analogue gauge cluster that includes a tachometer and an outside temperature display. Chrome accents around the gauges contribute to Vibe's contemporary style.





VIBE INTERIOR

THE VIBE EXPERIENCE STARTS HERE. A great driving experience has two essential components. The first is a fine sense of control. The ergonomically designed Vibe interior helps to keep you firmly in charge, with an excellent view of the world around you, clear analogue gauges and well-placed switches and controls. The other half of the equation is comfort, and Vibe has that covered, too. All seats offer the support you look for on long trips, and the front buckets are contoured to hold you in place through the curves. There's also standard air conditioning, complete with a special filter that helps keep the air in the cabin clean and fresh. You can even add a touch of luxury to your Vibe experience by selecting the available leather seating surfaces.

Every Vibe is a treat for the ears, with a standard AM/FM stereo system with a CD player and a built-in equalizer. A 6-disc CD changer and a system with both a CD player and MP3 playback capability are also available.



Hear every nuance in your road music with Vibe's 7-speaker premium Monsoon audio system, which comes complete with a subwoofer. It's standard on Vibe GT and available on Vibe and Vibe AWD.







IT ALL FITS.

MORE FLEXIBLE THAN YOUR AVERAGE YOGA INSTRUCTOR.

When it comes to carrying gear, Vibe is about as flexible as they come. The rear seatbacks fold down individually. So does the front-passenger seatback. Vibe has a long, wide cargo hold with

a flat floor made of resilient composite material. There's also an accessory track system in the rear cargo area that makes it a breeze to keep things securely tied in place while you're underway.



A. With all seats in place, Vibe has room for 5 occupants and up to 547 L (19.3 cu. ft.) of cargo. **B.** Fold the right rear seatback down and Vibe can still accommodate 3 occupants and an even greater amount of cargo. **C.** With both the right rear seatback and the front passenger seatback folded, you can carry cargo items up to 2.44 m (8 ft.) long inside your Vibe with the tailgate closed. **D.** With both rear seatbacks folded, Vibe's cargo capacity is a tremendous 1533 L (54.1 cu. ft.).

TECHNOLOGY

THE FUTURE IS HERE – AND IT’S FRIENDLY. Take a close look at Vibe and you’ll discover some of the most advanced technology in the small car class. Variable valve timing, available all-wheel drive (AWD), StabiliTrak stability enhancement system: it’s all here. And it all contributes to making Vibe an extraordinarily enjoyable drive.



1. CRUMPLE ZONES

With a safety cage, crumple zones, and frame and body panels constructed of high-strength steel, Vibe is designed to absorb energy and resist passenger-compartment intrusion.

2. LONG-LIFE COMPONENTS

Maintenance needs won’t interrupt your driving pleasure very often. The spark plugs are engineered to last 166,000 km and the engine coolant is only scheduled for replacement every 5 years or 240,000 km.*

3. BRAKES

Every Vibe features ventilated front disc brakes for strong, sure stops. Vibe GT and Vibe AWD include the added peace of mind of a four-wheel anti-lock braking system (ABS). Like any purebred performance machine, Vibe GT sports rear disc brakes for added stopping power.

4. OCCUPANT PROTECTION

Front and rear crush zones, a solid steel safety cage, standard frontal air bags and available front seat-mounted side-impact air bags and front and rear head curtain air bags are some of the features designed to protect Vibe’s occupants in a crash.

5. ALL-WHEEL DRIVE

Vibe AWD features a sophisticated all-wheel-drive system. It constantly monitors for wheelspin and adjusts power distribution automatically to help keep you on the move.

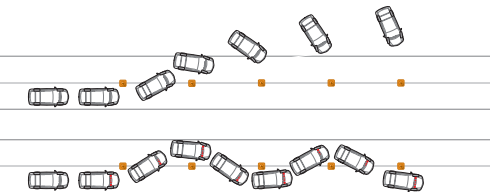
6. REAR SUSPENSION

The independent rear suspension on Vibe AWD helps keep the rear wheels ideally positioned for increased traction.

*Maintenance needs vary with different uses and driving conditions. Refer to the Owner’s Manual for more information.

STABILITRAK

With the available StabiliTrak vehicle stability enhancement system, Vibe helps you avoid one of the most disturbing situations in driving: the lateral skid. Any time StabiliTrak’s sensors detect that a sideways skid is underway, the system takes immediate action, selectively applying the brakes to help return the car to your desired line.





Pontiac is all about vehicles that connect you to the pure joy of driving.

OnStar adds another kind of connection – one that can enhance your sense of peace of mind. All it takes is a single push on the blue OnStar button usually located on the interior rear-view mirror, in the overhead console, or near the radio display to connect you with one of our specially trained OnStar Advisors. They are standing by, ready to provide support 24 hours a day, 365 days a year*.

What can OnStar Advisors do for you? They can provide a wealth of information and perform a variety of services, including a remote diagnostic check of your vehicle's engine and electrical components. In an emergency, an Advisor will attempt to locate your vehicle, find out what assistance you need, and notify nearby emergency service providers. And if air bags are deployed in your vehicle, an Advisor will contact you to determine if you are in need of assistance.

Another convenient feature is OnStar Hands-Free Calling, a hands-free, voice-activated wireless technology integrated into your vehicle. It's there in case your hand-held phone is lost, forgotten or has a low battery. Even better, there are no additional monthly fees, or additional long distance and roaming charges. And as a new customer, you will receive 30 complimentary minutes good for two months after activation.

Now you can enjoy the peace of mind that comes with knowing you're doing all you can to help keep you, your family, and your vehicle safe. Just ask the almost 150,000 people who have become OnStar subscribers in Canada. How hard does OnStar work for you? The facts speak for themselves: every month in Canada OnStar Advisors handle an average of 9100 routing calls, 2500 emergency calls, 2600 door unlocks, and 625 Roadside Assistance dispatches.

OnStar offers two different service plans, allowing you to select the services that are most convenient for you. The Safe & Sound Plan is available on all Vibe models. In addition, the available Directions & Connections Plan offers all of the safety and security services included in the Safe & Sound Plan, plus you'll have access to driving directions and information and convenience services and RideAssist. See your dealer for more information on plans and services.

*OnStar services require vehicle electrical system (including battery), wireless service, and GPS satellite signals to be available and operating for features to function properly. Not all OnStar features are available on all vehicles. OnStar Hands-Free Calling requires a Hands-Free enabled vehicle, existing OnStar service contract, and prepaid calling minutes, and is not available in Alaska and some other markets. Calls may be made to the U.S. and Canada only. OnStar voice recognition system may not work with some voices. OnStar acts as a link to existing emergency service providers. Subscription Service Agreement required. Due to the transition of the wireless industry from analogue to digital technology, as of January 1, 2008, OnStar plans to offer service only through equipment that operates on the digital network, which may require the purchase of a system upgrade for eligible vehicles. Call 1.888.4.ONSTAR (1.888.466.7827), TTY 1.877.248.2080 or visit onstar.ca for OnStar's Terms & Conditions, Privacy Policy, and system limitations and details.



A STORY ONLY GENERAL MOTORS CAN TELL.

General Motors' commitment to setting the highest standards in quality, safety, innovation, and fuel efficiency are matched by an equally strong commitment to the community.

DID YOU KNOW?

QUALITY: GM plants swept the J.D. Power Initial Quality StudySM* rankings for North and South America: Gold and Silver Plant Quality Awards for the Canadian Oshawa #2 and #1 car plants, in addition to the Bronze Plant Quality Award for the Hamtramck, Michigan plant.

SAFETY: General Motors is the only automotive manufacturer committed to offering a full range of cars, trucks, and SUVs that provide safety protection before, during and after a collision. GM vehicles are equipped with a range of features and technologies that help drivers avoid collisions, reduce the risk of injury should a collision prove unavoidable, and help you get the assistance you need after a collision.

INNOVATION: GM is at the forefront of automotive technology with breakthrough features such as OnStar and XM Satellite Radio.

FUEL EFFICIENCY: GM offers more cars than any other automaker in Canada that get better than 7.0 L/100 km in highway driving. GM has also won more EnerGuide fuel-efficiency awards than any other car company.

GM IS COMMITTED TO CANADA.

INVESTMENT: GM invests more in Canada than any other car company: The \$2.5 billion Beacon Project represents the largest automotive investment in Canadian history.

EMPLOYMENT: GM directly employs over 20,000 people in Canada – more than any other car company.

DESIGN: GM is the only car company that designs, engineers and builds cars in Canada.

GM IS BEHIND YOU AND YOUR VEHICLE

GM is equally comprehensive in the way it backs its Pontiac vehicles. All Pontiac models include:

- 3-year/60,000 km** complete vehicle repair coverage
- 6-year/160,000 km** corrosion perforation coverage
- 8-year/130,000 km** coverage on catalytic converters and powertrain control modules (PCMs)
- 3-year/60,000 km** 24-hour Roadside Assistance.

*General Motors Corporation – Oshawa #2 (Ontario – Car) was the highest ranked plant, Oshawa #1 (Ontario) was the second ranked plant and Hamtramck, MI was the third ranked plant in North/South America among plants producing vehicles for the U.S. market in J.D. Power and Associates 2005 U.S. Initial Quality StudySM. Study based on a total of 62,251 U.S. consumer responses indicating owner reported problems during the first 90 days of ownership.

www.jdpower.com

**Whichever comes first.



CHEVROLET PONTIAC BUICK GMC CADILLAC SATURN SAAB HUMMER

NOW FOR MORE CHOICES

KICK IT UP A NOTCH. Make your new Vibe even more of a pleasure to drive with a few carefully selected GM Accessories. GM Accessories are the only accessories that are integrated into the process of designing your vehicle, ensuring excellent fit, finish and functionality. And only GM Accessories are backed by GM's 3-year/60,000 km New Vehicle Limited Warranty.* They can also be included in your new-vehicle lease or finance agreement through GMAC. Ask your dealer for a complete list of the GM Accessories available for your Vibe. Or visit gmcanada.com

Genuine GM Accessories for Vibe include:

- Ground Effects Package
- Upper and lower midgate spoilers
- Convenience net
- Ventvisors
- Exhaust tip
- Pet Restraint Package
- Seatback storage.

* Whichever comes first, when permanently installed by the dealer at the time you purchase or lease your new vehicle.



Accessories



PONTIAC VIBE SPECIFICATIONS

SAFETY AND SECURITY	VIBE	AWD	GT
Air bags – dual-stage, driver and front-passenger, frontal	S	S	S
Air bags – driver and front-passenger, head curtain and seat-mounted side-impact	0	0	0
Brake/transmission shift interlock (automatic transmission only)	S	S	–
Door locks – power (auto-locking feature included with automatic transmission)	0 ¹	0 ¹	S
Door locks – rear door, child-security	S	S	S
Headlights – Daytime Running Lights with automatic light control	S	S	S
Keyless entry system – remote	0 ¹	0 ¹	S
OnStar In-Vehicle Communications and Assistance Service ² – includes one-year Safe & Sound Plan	0	0	0
Safety belts – front shoulder, height-adjustable	S	S	S
Safety restraints – LATCH (Lower Anchors and top Tethers for Children), rear seats	S	S	S
Security system – includes alarm, audible/visible theft-deterrent system with glass breakage sensor	0 ³	0 ³	0

1 Included with Power Package. 2 Not available with navigation system or security system. Requires Power Package on Vibe/Vibe AWD and power sunroof on all models. 3 Requires Power Package.

MECHANICAL	VIBE	AWD	GT
Battery – with run-down protection ⁴	0 ¹	0 ¹	S
Brakes – power, front disc/rear drum	S	S	–
Brakes – power, 4-wheel disc	–	–	S
Brakes – 4-wheel anti-lock braking system (ABS) with tire pressure monitor	0	S	S
Drive – front-wheel	S	–	S
Drive – all-wheel drive	–	S	–
Engine – 1.8L DOHC Variable Valve Timing-intelligence (VVT-i) Horsepower – 126 @ 6000 rpm, Torque – 122 lb.-ft. @ 4200 rpm	S	–	–
Engine – 1.8L DOHC Variable Valve Timing-intelligence (VVT-i) Horsepower – 118 @ 6000 rpm, Torque – 115 lb.-ft. @ 4200 rpm	–	S	–
Engine – 1.8L DOHC Variable Valve Timing Lift-intelligence (VVTL-i) Horsepower – 164 @ 7600 rpm, Torque – 125 lb.-ft. @ 4400 rpm	–	–	S
Engine block heater	S	S	S
Exhaust system – aluminized stainless steel	S	S	S
Exhaust tip* – polished stainless steel	0	0	0
StabiliTrak – vehicle stability enhancement system, includes traction control	0 ⁵	–	–
Steering – power, rack-and-pinion	S	S	S
Suspension – front MacPherson strut/rear torsion beam	S	–	S
Suspension – front MacPherson strut/rear double wishbone	–	S	–
Transmission – 5-speed manual	S	–	–
Transmission – 6-speed manual	–	–	S
Transmission – 4-speed automatic with overdrive	0	S	–

1 Included with Power Package. 4 Not included when available power sunroof specified. 5 Requires 4-wheel anti-lock braking system, Power Package and 4-speed automatic transmission. *Regular production accessory, dealer installed.

EXTERIOR	VIBE	AWD	GT
Fog lights	S	S	S
Glass – solar control, tinted	S	S	S
Liftgate – rear liftgate with liftglass	S	S	S
Mirrors – power remote control, body-colour	S	S	S
Mouldings – bodyside, body-colour	S	S	S
Paint – Monotone Exterior Appearance, includes body-colour front and rear bumpers, cladding, rocker mouldings and door handles	S	S	S
Paint – Two-Tone Appearance Package, includes solid upper colour with Graphite front and rear bumpers, lower side door panels and fender flares ⁶	0	0	0
Rear bumper protector* – heavy-duty rubber, protects bumper when loading and unloading	0	0	0
Roof rack – includes side rails	S	S	S
Sunroof – power, sliding glass panel with express-open feature and sunshade	0	0	0
Tires – P205/55R16 all-season	S	S	S
Tires – P215/50R17 performance (included with 17" aluminum wheels)	–	–	0
Wheels – 16" steel with bolt-on wheel covers (A) ⁷	S	S	–
Wheels – 16" aluminum (B) ⁷	0	0	S
Wheels – 17" aluminum includes P215/50R17 performance tires (C) ⁷	–	–	0

6 Not available with Sport Ground Effects Package. 7 Wheels shown on page 18. *Regular production accessory, dealer installed.

EXTERIOR (continued)	VIBE	AWD	GT
Windshield wipers – 2-speed with variable delay (intermittent)	S	S	S
Wiper/washer – rear, 2-speed with variable delay (intermittent)	S	S	S
Spoiler* – rear, lower midgate ⁸	0	0	0
Spoiler* – rear, upper midgate ⁸	0	0	0
Sport Ground Effects Package* – includes lower side rocker extensions and lower front and rear fascia extensions ⁸	0	0	0

8 Available with Platinum, Abyss or Salsa exterior colours. *Regular production accessory, dealer installed.

INTERIOR	VIBE	AWD	GT
Air conditioning – with clean-air filter	S	S	S
Cargo net system* – adjustable to 22 positions	0	0	0
Cargo mat – rear, carpeted with embroidered Pontiac logo	S	S	S
Cargo organizer* – rear, heavy-duty plastic, adjustable and leak-proof	0	0	0
Console – front floor with double-bin storage, armrest, cupholders and CD storage	S	S	S
Cruise control – electronic with resume, coast and decelerate/accelerate features	0 ¹	0 ¹	S
Defogger – electric rear-window	S	S	S
Floor mats – front and rear, carpeted with embroidered Pontiac Logo	S	S	S
Fuel filler door – remote release	S	S	S
Heat ducts – rear-seat, floor	S	S	S
Instrumentation – chrome accented analogue cluster (includes speedometer, tachometer, coolant temperature, fuel gauges with exterior temperature display, door ajar and low washer fluid level indicators)	S	S	S
Lights – illuminated entry and cargo area	S	S	S
Mirror – rear-view with dual reading lights ⁴	0 ¹	0 ¹	S
Power outlet – in-dash 115-volt AC household current with rating to 1 amp	S	S	S
Rear cargo accessory track system – with 8 chrome hooks mounted on the sides and 8 adjustable tie-down anchors	S	S	S
Seatback storage* – includes first aid kit and 2 storage areas	0	0	0
Security cover – cargo area	S	S	S
Steering column – tilt adjustable	S	S	S
Steering wheel – leather-wrapped	0 ⁹	0 ⁹	S
Storage area – driver's side, pull-down	S	S	S
Sunshades – LH and RH padded; vanity mirrors	S	S	S
Windows – power, driver's express-down and passenger window lock-out features	0 ¹	0 ¹	S
Power Package – includes remote keyless entry system, power door locks, power windows, cruise control, interior rear-view mirror with dual reading lights ⁴ and battery run-down protection	0	0	S
Smoker's Package – includes ashtray and lighter	0	0	0

1 Included with Power Package. 4 Not included when available power sunroof specified. 9 Included with available leather seating surfaces.

*Regular production accessory, dealer installed.

SEATS	VIBE	AWD	GT
Driver – cloth, reclining bucket with height adjuster and vertical adjusting head restraint	S	S	S
Front passenger – cloth, reclining bucket, flat-folding with work table surface and vertical adjusting head restraint	S	S	S
Leather seating surfaces	0 ¹⁰	0 ¹⁰	0
Seatback – rear, 60/40 flat-folding	S	S	S

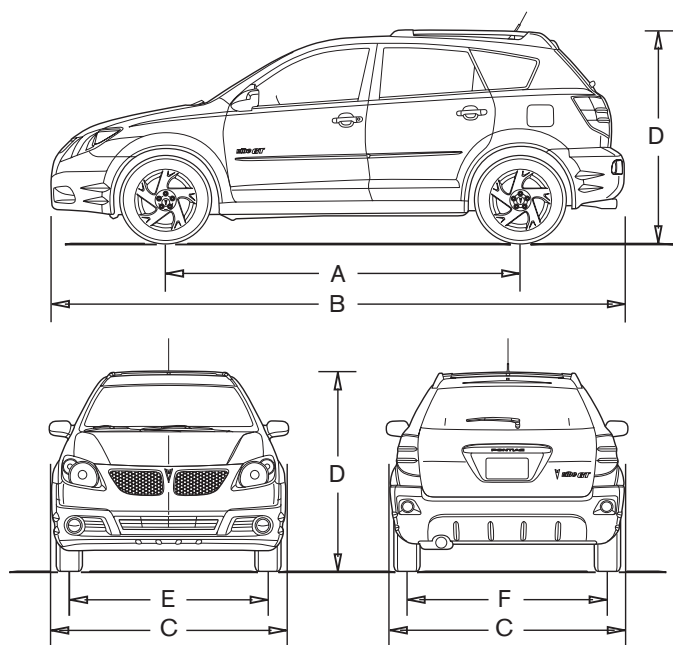
10 Includes leather-wrapped steering wheel and shifter.

SOUND SYSTEMS	VIBE	AWD	GT
All Vibe sound systems include an electronically tuned Delco AM/FM stereo with seek up/down, Radio Data System (RDS), programmable equalizer, digital clock and TheftLock			
AM/FM stereo with CD player	S	S	S
AM/FM stereo with CD player and MP3 playback	0 ¹¹	0 ¹¹	0
AM/FM stereo with 6-disc in-dash CD changer	0 ¹¹	0 ¹¹	0
4-speaker sound system	S	S	–
7-speaker Monsoon 200-watt premium sound system (amplified) with integrated rear subwoofer	0	0	S

11 Requires 7-speaker Monsoon 200-watt premium sound system.

S – Standard. 0 – Optional individually or in combination with other optional equipment.

DIMENSIONS



EXTERIOR, MM (IN.)

Wheelbase (A)	2600 (102.4)
Length (B)	4365 (171.9)
Width (C)	1775 (69.9)
Height (D)	1580 (62.2)
Front tread (E)	1515 (59.6)
Rear tread (F)	1495 (58.9)

INTERIOR, MM (IN.) FRONT/REAR

Headroom	1030/1011 (40.6/39.8)
Legroom	1061/923 (41.8/36.3)
Shoulder room	1352/1336 (53.2/52.6)
Hip room	1312/1214 (51.7/47.8)

CAPACITIES/WEIGHT

Cargo, L (cu. ft.)	– Rear seats up	547 (19.3)
	– Rear seats down	1533 (54.1)
Fuel tank, L (imp. gal.)	– Vibe FWD/Vibe GT	50 (11.0)
	– Vibe AWD	45 (9.9)
Curb weight (est.), kg (lb.)	– Vibe FWD	1225 (2701)
	– Vibe AWD	1350 (2976)
	– Vibe GT	1270 (2800)

TOWING

1.8L DOHC (VVT-i) 5-speed manual transmission 3.94 final drive ratio 680 kg (1500 lb.) maximum gross trailer weight*
1.8L DOHC (VVT-i) Vibe 4-speed automatic transmission 2.96 final drive ratio 680 kg (1500 lb.) maximum gross trailer weight*
1.8L DOHC (VVT-i) Vibe AWD 4-speed automatic transmission 4.24 final drive ratio 680 kg (1500 lb.) maximum gross trailer weight*
1.8L DOHC (VVTL-i) 6-speed manual transmission 4.53 final drive ratio 680 kg (1500 lb.) maximum gross trailer weight*

*Includes weight of trailer, cargo, passengers and equipment. All towing recommendations are subject to change. Trailer tongue load should be 10% of the maximum trailer weight but should not exceed the load rating specified for that vehicle, engine or hitch combination. See your dealer or refer to the Vibe Owner's Manual for details.

COMMITMENT:



Canada

Expect nothing less than a 100% commitment. You can feel confident that you're choosing a real driver's car – if it bears the Pontiac name. You can also count on your Vibe to continue to exceed your expectations, not just in the way it handles on the road, but also through a comprehensive series of support programs. Some make it easier to purchase or lease a Pontiac Vibe. Others help protect you and your vehicle down the road. A powerful example of the level of protection you can expect is the GM TOTAL™ Warranty. It is so thorough it covers your vehicle – from the roof right down to the tires. So when you drive off the lot of your Pontiac dealership, you can do so with total confidence. Peace of mind is knowing that your vehicle is built for the long haul, and is backed by a comprehensive warranty.

THE GM TOTAL™ WARRANTY:†

The GM TOTAL™ Warranty is your promise of total warranty protection. It covers every new Pontiac Vibe for 3 years or 60,000 km*. Complete vehicle repairs are covered,** including parts and labour, with no deductible. The warranty includes:

- 3-year/60,000 km* complete vehicle repair coverage
- 6-year/160,000 km* corrosion perforation coverage
- 8-year/130,000 km* coverage on catalytic converters and powertrain control modules (PCMs).

*Whichever comes first.
**To correct any defects in material or workmanship occurring during the warranty period. Regular maintenance is not included, nor is excessive wear and tear caused by reckless or negligent driving.

EXTENDED POWERTRAIN LIMITED WARRANTY:†

Every Pontiac Vibe is also covered by a special Powertrain Limited Warranty with no deductible for 5 years or 100,000 km.* So you can count on your Pontiac Vibe for much more than its styling and engineering – today, and down the road.

*Whichever comes first.

OTHER OWNERSHIP PRIVILEGES AND PROGRAMS:†

- **Roadside Assistance** – 24/7 service via toll-free number during your warranty period, anywhere in Canada or the United States
- **Courtesy Transportation** – may be offered during the warranty period
- **GM Protection Plan (GMPP)** – the only extended services contract backed by the resources and commitment of General Motors; GMPP may be purchased at the time of your sale or lease, or subsequently
- **GM Mobility Program** – you may be eligible for reimbursement of up to \$1000 (taxes included) for adaptive equipment for your GM vehicle
- **GM Accessories** – personalize your vehicle with GM Accessories, specifically engineered for your new GM vehicle
- **GM Goodwrench Service** – with GM-certified technicians and GM-approved parts, nobody knows your GM vehicle better.

TO HELP YOU PURCHASE OR LEASE A NEW VEHICLE:

- **GMAC Financing** – on the spot financing at your GM dealership††
- **GMAC SMARTLEASE** – a smart alternative to traditional financing††
- **GM Student Bonus Program** – GM will cover the first two purchase finance or lease payments and the lease security deposit on eligible new GM vehicles for students and recent graduates of high school, college or university.†
- **The GM Card** – eligible cardholders may be able to redeem up to \$3500 on GM Card® Earnings toward the total purchase price or lease down payment on selected vehicles. For more information on The GM Card please call 1-800-461-3279.†

INFORMATION RESOURCES:

You can find more information about these programs from your GM dealer, or at these information centres:

- The GM Web site at gmcanada.com
- The GM Customer Communication Marketing Centre at 1-800-GM-DRIVE (1-800-463-7483 or 1-800-263-3830 for TDD users) – for information about any GM product or service, including The GM Card and the GM Mobility Program
- For information about GMAC visit gmcanada.com or call 1-800-616-4622.

†Conditions and limitations apply.
††Subject to eligibility.

WHEELS



A – 16" steel, bolt-on wheel cover



B – 16" aluminum wheel



C – 17" aluminum wheel

FABRICS



Vibe Cloth
14C – Graphite



Vibe Cloth
82C – Slate



Vibe Leather
142 – Graphite

EXTERIOR/INTERIOR COLOUR COMPATIBILITY

▼ Exterior	Interior ►	14 – Graphite	82 – Slate
14 – Platinum		•	•
19 – Abyss		•	•
40 – Frosty		•	•
44 – Salsa		•	•
46 – Stealth		•	•
62 – Neptune		•	•
81 – Lava		•	•
90 – Moonstone		•	•

A WORD ABOUT THIS BROCHURE

Some of the equipment shown or described throughout this brochure may be available at extra cost. We have tried to make this brochure comprehensive and factual. We reserve the right, however, to make changes at any time, without notice, in prices, colours, materials, equipment, specifications, models and availability. Specifications, dimensions, measurements, ratings and other numbers in this brochure and other printed materials provided at the dealership or affixed to vehicles are approximates based upon design and engineering drawings and prototypes and laboratory tests. Your vehicle may differ due to variations in manufacture and equipment. Since some information may have been adapted since the time of the printing, please check with your Pontiac dealer for complete details. General Motors of Canada Limited reserves the right to lengthen or shorten the model year for any product, for any reason, or to start and end model years at different times.





PRIVACY STATEMENT

At General Motors of Canada Limited ("GM Canada") we respect your privacy and value our relationship with you. Your personal information will be protected, will never be sold, and will be used only by GM Canada, our affiliates, dealers/retailers, and service suppliers (only to provide services). If you wish to be removed from GM Canada marketing communications; would like to limit only certain marketing communications from us; would like a listing of our specific uses or further information about those with whom your information is shared; or for further information about our Privacy Policy and practices, please contact us at 1-800-GM-DRIVE (1-800-463-7483) or through our Web site at gmcanada.com

A WORD ABOUT ASSEMBLY

Pontiacs are equipped with engines and components produced and assembled by different operating units of General Motors, its subsidiaries and suppliers and these engines and components may change or be obtained from different sources from time to time. All such engines and components are approved for use in Pontiacs. Certain equipment ordered may be unavailable at the time of assembly and we suggest that you verify that your vehicle includes the equipment you ordered, or if there are changes, that they are acceptable to you.

TRADEMARKS

The marks appearing in this Pontiac Vibe brochure including, but not limited to: General Motors, , the , the , the , Pontiac, the Pontiac emblem, G6, Grand Prix, Montana SV6, Pursuit, Solstice, Torrent, Vibe, Wave, and their respective logos, emblems, slogans and vehicle model names and body designs; and other marks such as Delco, SMARTLEASE, StabiliTrak, and TOTAL Warranty are trademarks of General Motors Corporation and/or General Motors of Canada Limited, its subsidiaries, affiliates or licensors.

GMAC is a registered trademark of the General Motors Acceptance Corporation.

OnStar, the OnStar logo and the OnStar button are registered trademarks of the OnStar Corporation.

Monsoon and TheftLock are registered trademarks of Delphi Automotive Systems.

Radio Data System (RDS) is a registered trademark of the U.S. National Association of Broadcasters.

COPYRIGHT

©Copyright 2005 General Motors of Canada Limited. All Rights Reserved. All text, images, graphics, and other materials in this Pontiac Vibe brochure are subject to the copyright and other intellectual property rights of General Motors Corporation and/or General Motors of Canada Limited. These materials may not be reproduced, distributed or modified without the express written permission of General Motors Corporation and/or General Motors of Canada Limited.

Printed in Canada, September 2005.

EXTERIOR COLOURS

Colours may not be exactly as illustrated due to restrictions of the printing process. Please see your Sales Consultant for specific colour and model availability.



14 – Platinum



19 – Abyss



40 – Frosty



44 – Salsa



46 – Stealth



62 – Neptune



81 – Lava



90 – Moonstone





GRAND PRIX



SOLSTICE



PURSUIT



G6



MONTANA SV6



VIBE



TORRENT



WAVE